

**Plainview-Old Bethpage
Central School District**

**Incoming Grade 8
Parent Transition Meeting**

January 24, 2023

Preference Form

- The 8th grade preference form was sent to all incoming 8th grade families via school messenger

<https://forms.gle/VQHBcmYYB7MVWnmp7>

- Forms are due **January 31, 2023**



Overview of Courses Available

Core Area Subjects: *(Every Day For One Period)*

- English
- Social Studies
- Science 8 /Earth Science
 - Accelerated Earth Science has additional lab period every other day
- Math 8/ Algebra
- World Languages

Special Area Subjects: *(Every Other Day All Year)*

- Physical Education
- Music
- Technology
- Art 8/Studio Art 9 (Meets Daily)
- FACS

Music Studio 8



The 8th grade Studio Music course will continue to explore the groundwork set in the 7th grade course, however, it will dive deeper into formal musical composition, relating it to piano/keyboard skills, arranging, and musical theory. There will be aspects of performance based on piano/guitar/bass to accompany the audio recording component related to music software. Additionally, it will focus on STEAM connections and loop students into the high school music program seamlessly.



Technology 8

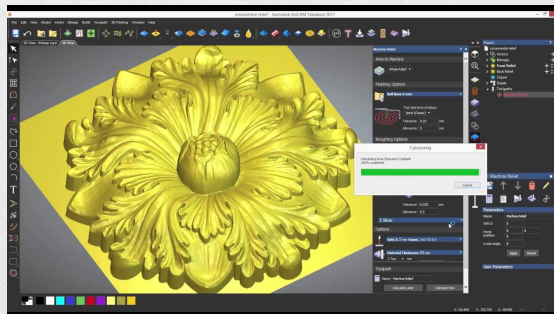


Technology 8 gives students the opportunity to explore an array of topics that are offered in the HS Technology Courses. It is designed to further develop their problem solving abilities and hands-on skills to help define their preferences for the future.

Computer Aided Design Programs

Inventor, TinkerCAD, and ArtCam

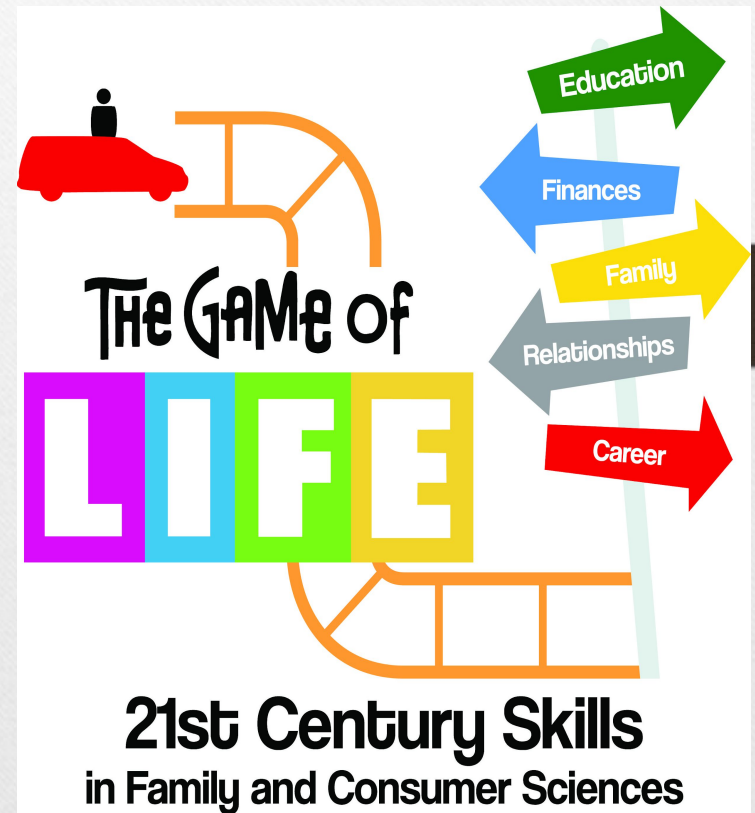
Engineering Concepts
3D printing
VEX Robotics



CNC router
Woodworking
Programming (robotics)

FAMILY AND CONSUMER SCIENCES

- CAREER EXPLORATION
- COMMUNITY SERVICE
- NUTRITION & HEALTHY COOKING
- ENTREPRENEURSHIP
- PERSONAL RESOURCES MANAGEMENT/
INDEPENDENT LIVING
- PERSONAL FINANCE



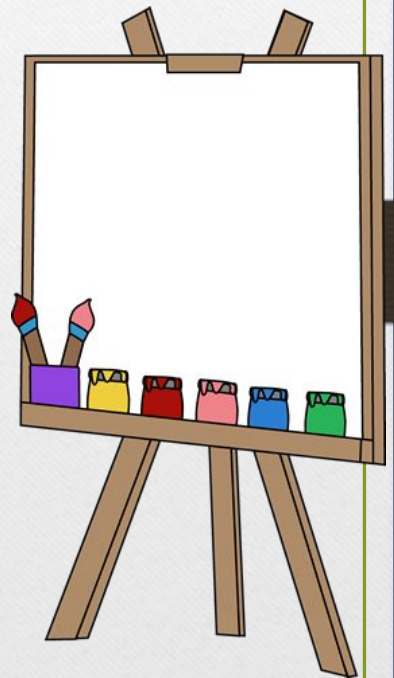


Art 8

Art 8 is a half-year level art course, that focuses on the core elements and principles of design. Students will complete projects to become creative thinkers throughout this course, and use a variety of artistic mediums to create art. Some of these mediums will include, but are not limited to; paint, pastels, pencil, charcoal, and a variety of 3D materials.

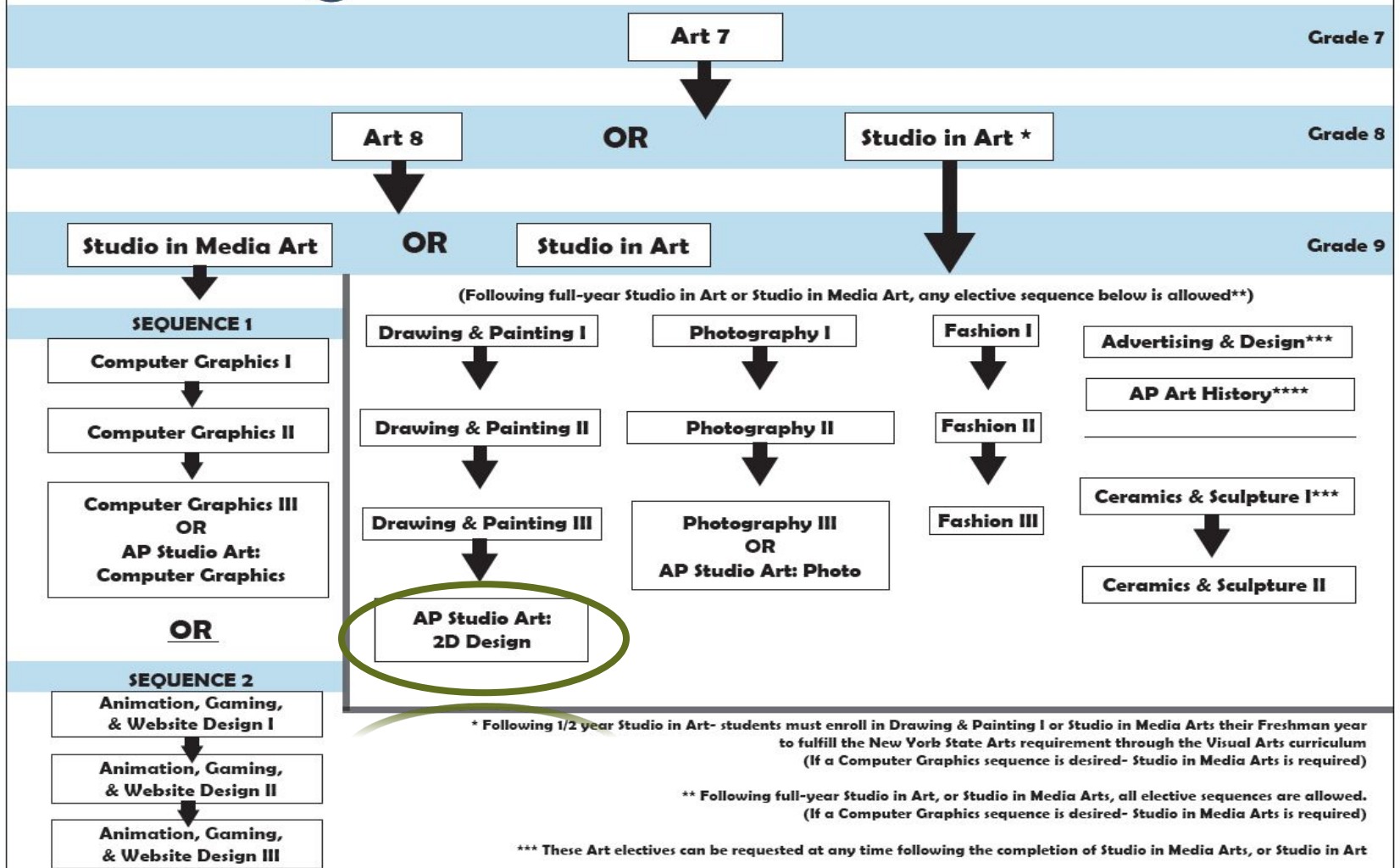
Studio Art 9

Studio Art 9 is a high school level, full-year, art course that fulfills the NYS Arts requirement for graduation. This foundation level art course prepares students for the advanced drawing & painting, fashion, ceramics, or photography sequential art courses offered at the high school level; and covers all elements and principles of design. Students will use a variety of artistic mediums throughout this course, including paint, pencil, oil pastel, charcoal, clay, and other 3D materials.





Art Department Flow Chart: Grades 7-12



(Following full-year Studio in Art or Studio in Media Art, any elective sequence below is allowed**)

* Following 1/2 year Studio in Art- students must enroll in Drawing & Painting I or Studio in Media Arts their Freshman year to fulfill the New York State Arts requirement through the Visual Arts curriculum (If a Computer Graphics sequence is desired- Studio in Media Arts is required)

** Following full-year Studio in Art, or Studio in Media Arts, all elective sequences are allowed. (If a Computer Graphics sequence is desired- Studio in Media Arts is required)

*** These Art electives can be requested at any time following the completion of Studio in Media Arts, or Studio in Art

****There is no prerequisite to AP Art History, and can be taken at anytime

Acceleration Options

➤ Earth Science + Lab

Replaces Science 8 and includes a lab every other day

➤ Algebra 1

Replaces Math 8

➤ Studio Art 9



All accelerated courses are credit bearing and will appear on your child's high school transcript.

Algebra/Earth Science

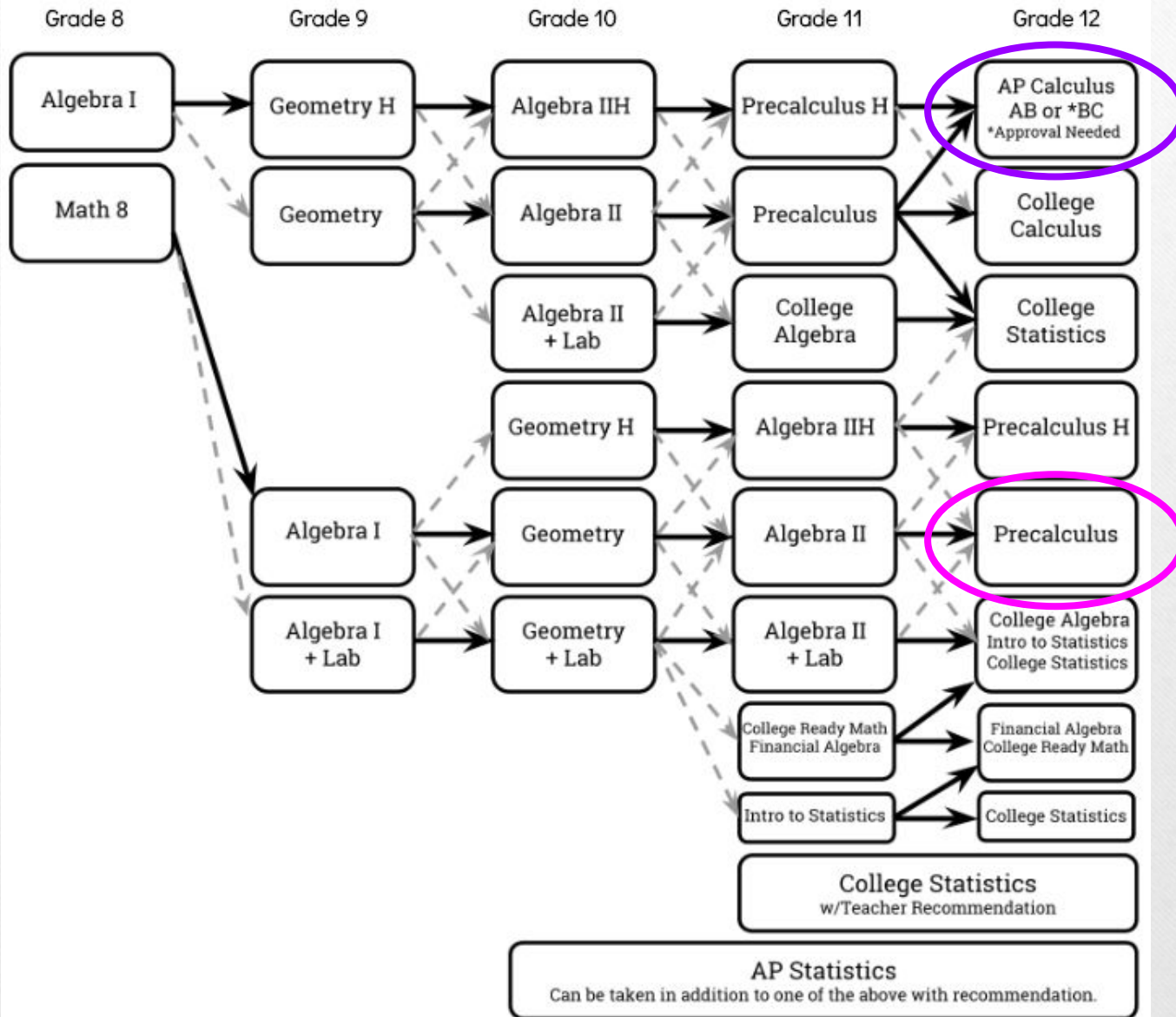
Students currently enrolled in Math 7 ACC will automatically be enrolled into advanced courses in both Algebra and Earth Science.



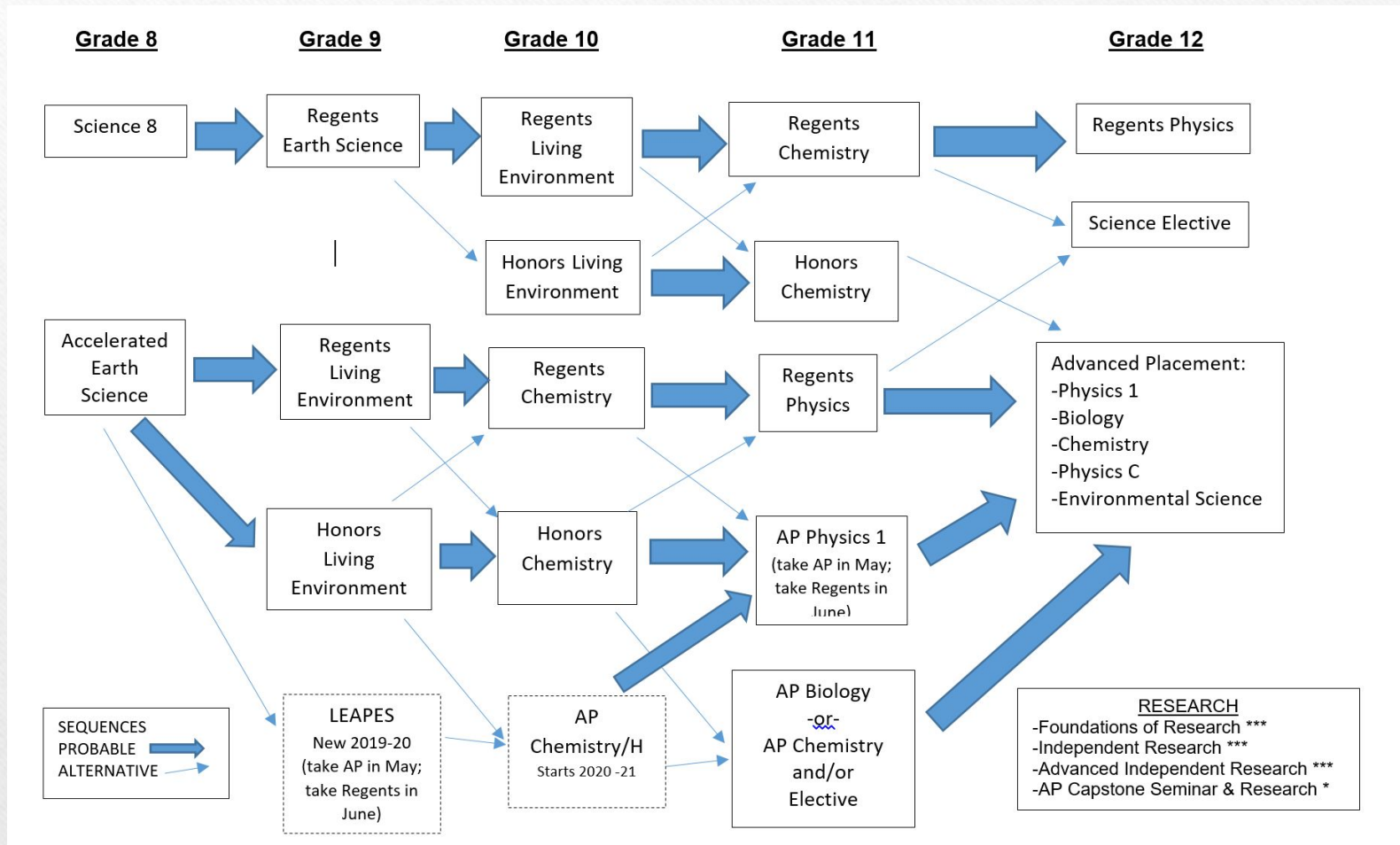
What is Self-Selection?

- **Opportunity to enroll in an accelerated course when not recommended**
 - ✓ **Conversation with the student**
 - ✓ **Conversation with teacher, appropriate chairperson, and Guidance Counselor**
- **What is the process for self-selection?**
 - ✓ **Complete and return a Self-Selection form for each accelerated course.**
 - ✓ **Form will be sent on February 8th and must be returned by February 15, 2023.**

POB JFK HS Mathematics Flow Chart



POB Science Flowchart



Eighth Grade Schedule- Science 8

	Marking Period 1	Marking Period 2	Marking Period 3	Marking Period 4
MAP	MAP	MAP	MAP	MAP
1	English	English	English	English
2	Social Studies	Social Studies	Social Studies	Social Studies
3	World Language	World Language	World Language	World Language
4	LUNCH	LUNCH	LUNCH	LUNCH
5	Math 8/ Algebra	Math 8/ Algebra	Math 8/ Algebra	Math 8/ Algebra
6	Science 8	Science 8	Science 8	Science 8
7	PE/ Special 1	PE/ Special 1	PE/ Special 1	PE/ Special 1
8	Studio Art or Special 2/Special 3	Studio Art or Special 2/Special 3	Studio Art or Special 2/Special 3	Studio Art or Special 2/Special 3

Eighth Grade Schedule- Earth Science

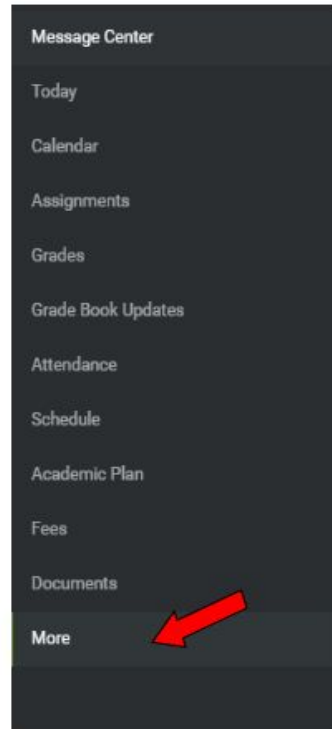
	Marking Period 1	Marking Period 2	Marking Period 3	Marking Period 4
MAP	MAP	MAP	MAP	MAP
1	English	English	English	English
2	Social Studies	Social Studies	Social Studies	Social Studies
3	World Language	World Language	World Language	World Language
4	LUNCH	LUNCH	LUNCH	LUNCH
5	Math 8/ Algebra/Geometry	Math 8/ Algebra/Geometry	Math 8/ Algebra/Geometry	Math 8/ Algebra/Geometry
6	ES	ES	ES	ES
7	PE/ES LAB	PE/ES LAB	PE/ES LAB	PE/ES LAB
8	Studio Art or Special 1/Special 2	Studio Art or Special 1/Special 2	Studio Art or Special 1/Special 2	Studio Art or Special 1/Special 2

How will I know the recommendations for my child?

Course Verification Forms

- All course verification (course registration) will be available to viewed on the parent portal on February 8, 2023.
- Changes should be submitted to your child's respective Guidance Office by February 15, 2023.
- Parents have the opportunity to discuss the recommendation with the teacher, appropriate chairperson, and guidance counselor.

The "More" tab is located on the bottom left of the Parent Portal. Please select "More" then select "Course Registration" to view your child's courses. There is an option to print at the bottom of the page.



Course Verification Form (course registration)

STUDENT NAME

Student Number: XXXXXXXX

Grade: 08

Requested Courses:

806 LUNCH 8

812 ENGLISH 8

822 MATH 8

830 SOCIAL STUDIES 8

805 PHYS ED 8

850 SPANISH 1R

903 STUDIO ART

857 TECHNOLOGY 8

403-1 EARTH SCI-R+LAB

403-2 EARTH SCI-R-LAB

Eighth Grade Services

- ICT Support
- Resource Room 3/6 - 6/6
- AIS services
- Reading services
- ENL services
- Speech
- Occupational Therapy

End of Year Assessments

- Students taking Earth Science and Algebra will take the New York State Regents Exam in those subjects.
- Students will take the World Languages Checkpoint Exam.
- These scores will be reflected on students' high school transcripts.



Students will also take final exams in major subject areas.

Additional Opportunities Available

Zero Period

- Clubs
- ELA AIS
- Math AIS

Ninth Period

- Remedial
(Monday, Tuesday, and
Thursday)



Successful 2023/2024 School Year

- A developmental year with many transitions:
 - Chronological vs. Developmental
 - Becoming more self aware
- Reinforce that support in school becomes a vital resource.
- The relationship between home and school is critical.
- It is important to communicate with your child as peer groups become an important outlet.
- Construct a program of courses that is appropriate.
- Acceleration in all courses is not always the best option.
- Take into account course recommendations prior to Self-Selecting.
- Continually monitor the information on the Portal.
- Teacher Contact (Phone, E-mail & Team Meetings)
- Join and attend PTA Meetings.
- It is important to communicate with your child about the proper use of cell phones.
- Encourage the use of remedial whenever possible.
- Reach out to your child's teacher whenever you have a question or concern. We are a team!

Empowering Approaches

A Student Going Into 8th Grade Should:

- I. Self-advocate:
 - a) Check their own Infinite Campus
 - b) Reach out to their teachers
- II. Take healthy risks
- III. Meet new people
- IV. Be realistic about what they need
- V. Reality vs Rigor
- VI. Set reachable goals and have a plan
- VII. Be more responsible at home and on social media

**Plainview-Old Bethpage
Central School District**

**Incoming Grade 8
Parent Transition Meeting**

January 24, 2023